

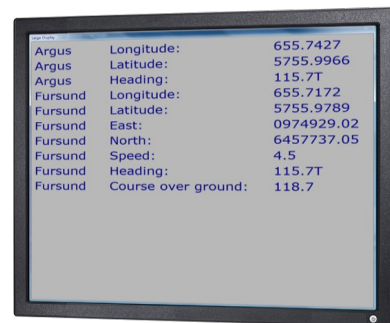
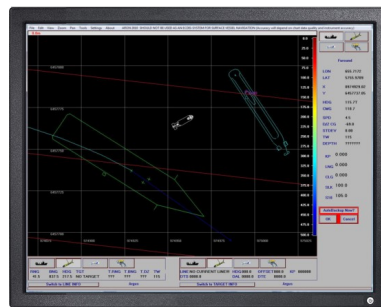
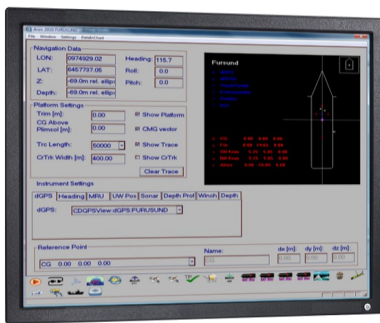
ARON 2010

Product Brief

What is ARON 2010 ?

Aron 2010 is a support tool for companies and organizations performing underwater operations.

Aron helps you getting a clear picture of what happens on and below the surface.



Once installed on board it helps you to:

Keep track on your main and underwater vessels.

Give navigational support to helmsman during survey operations.

Gather data from all your sensors such as GPS:s, Acoustic positioning systems, Gyros, Echo sounders, MRU:s and more.

Handle supporting information such as navigational lines, information about found objects, vessel traces and so on.

Calculate and output data to other systems on board.

Log data.

Handle a variety of different coordinate systems.

Replay operations during evaluation.

Who needs ARON 2010?

Typical situations where Aron will help you getting the work done faster, more reliable and with excellent documentation:

Sea floor surveys

Sub bottom surveys

ROV inspection

Cable tracking and laying

Underwater search operations

Pipeline surveys

Environmental surveys and operations

Diver operations

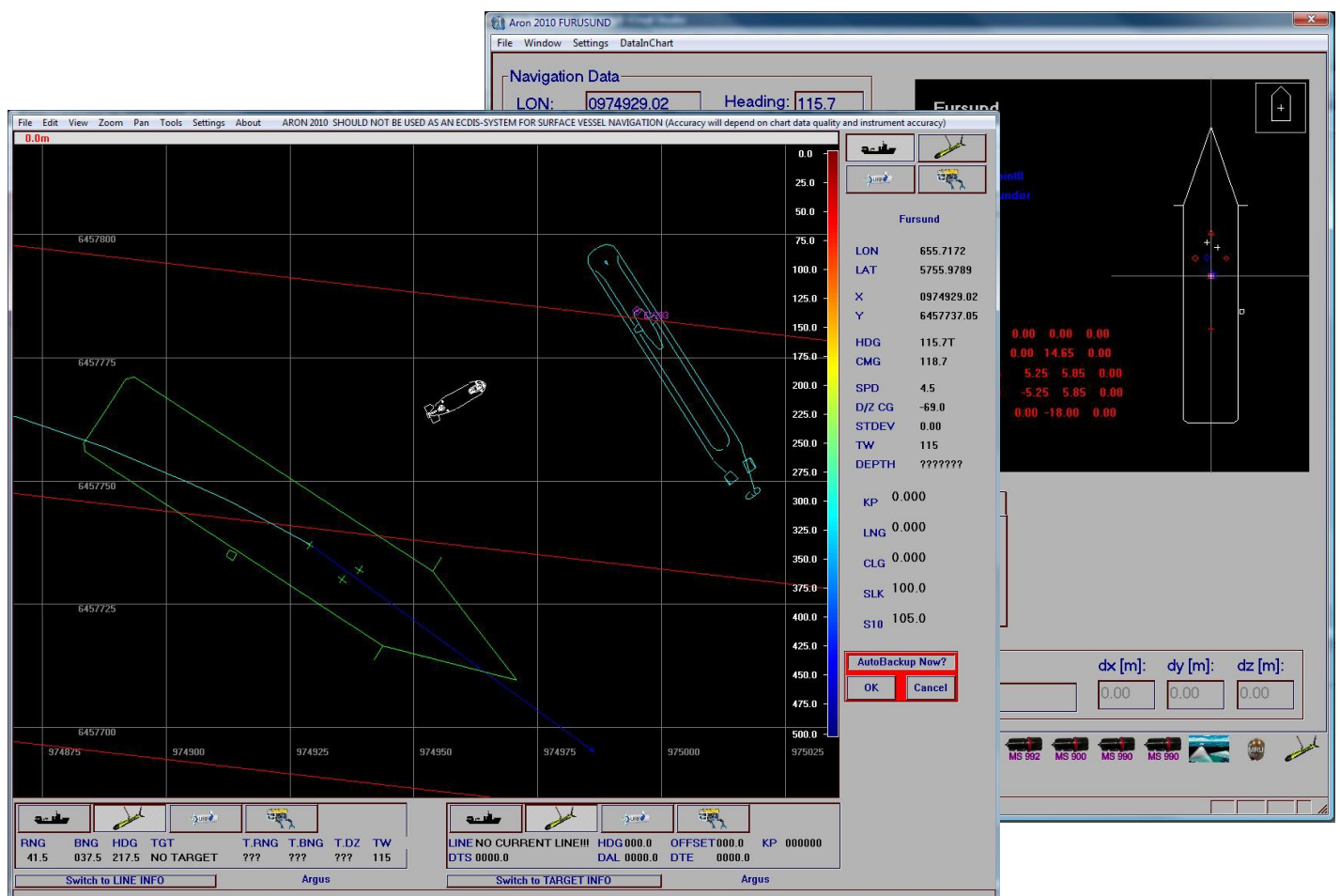
Marine biological work





Harbor inspection

Under water construction

Military underwater operations

and many more...



	
	
	ROV
LON	655.6714
LAT	5756.0014
X	0974889.52
Y	6457784.64
HDG	100.3T
CMG	Undefined
SPD	4.5
D/Z CG	-68.5
STDEV	0.00
TW	100
DEPTH	95.3
KP	0.000
LNG	0.000
CLG	0.000
SLK	100.0
S10	105.0

Features

Sensor data input via serial ports.

Parses most standard NMEA messages as well as a number of special messages.

Supports multiple vessels with custom outlines.

Interfaces a variety of sensors:

- GPS:s
- Gyros and other heading devices
- Underwater positioning systems
- Depth meters
- MRU:s
- Echo sounders
- Sonars
- Winches

Handles a number of coordinate systems such as WGS84 with UTM projection, RT90, GRS80 and ED50. Dynamic recalculation between different coordinate systems.

Modularity and scalability, it's easy to add and remove vessels and sensors and to reconfigure a vessel with a new set of sensors. Sensor position on vessel can easily be changed.

Data base with target, line, picture and video data.

Chart window for presentation of platforms, traces and data base objects. Chart window supports vector maps in shape format and geo-tiff raster data.

Operator configurable output to other systems.

Auto backup feature gives high data integrity.

Day and night colors.

Supports multi screen display.

Replay of logged data.

Runs under Windows XP, Vista and 7.

Display Coordinatsystem:

Zon

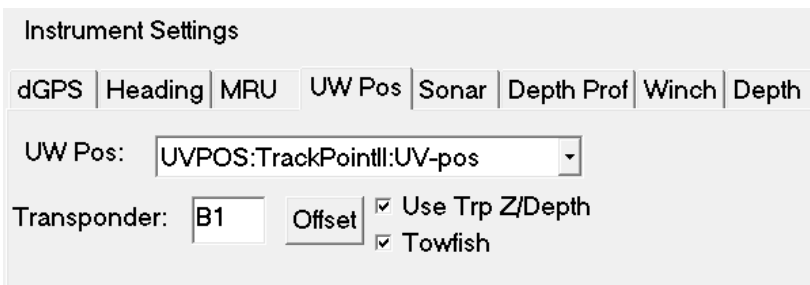
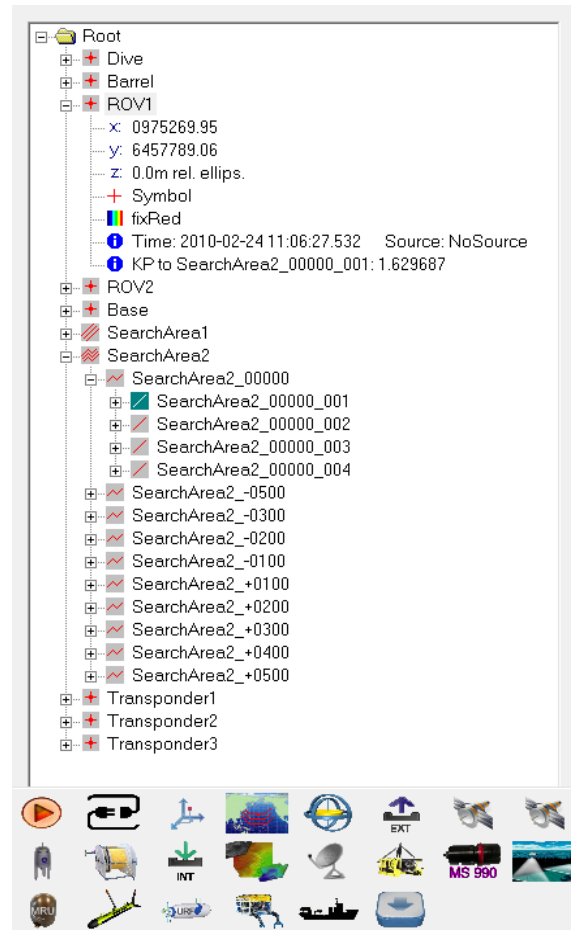
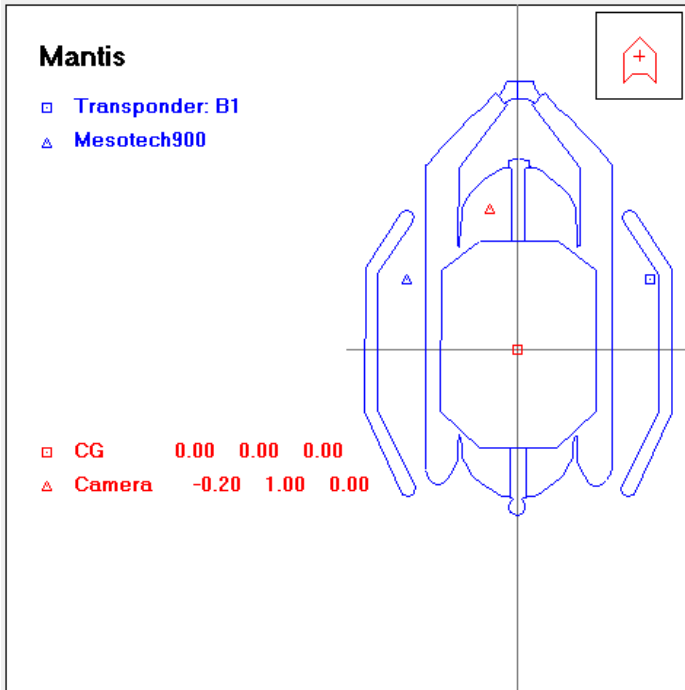
Centralmeridian:

False Northing:

False Easting:

Display coordinates as
 N-S-E-W Format:

Speed in:



Aron has contributed at several successful underwater operations, such as:

- The search and salvage of the Swedish DC3 airplane (lost during the cold war) in the Baltic 2003.
- The retrieval of the black box from a Swedish JAS fighter airplane which crashed in lake Vänern 1999.
- Numerous submarine rescue training operations performed by the Royal Swedish Navy.
- Sea floor and sub bottom surveys in the Baltic Sea and Atlantic Ocean.

Interested and want to know more?

Do you want a more detailed description of ARON 2010?

Do you need information on how ARON may be adapted to your particular situation?

Do you want a 30 day full featured trial version free of charge?

Do you have any other questions?

Then please visit our website <http://subvision.se/aron>

or call us: int +46 46 13 20 45

or mail to: info@subvision.se